

DIGITAL 5

The A-Mode
Echoscope



For the diagnosis
of sinus cavities

otopront.®

DIGITAL 5

Sinus Echoscope

This ultrasound unit is an easy to operate and likewise user-friendly device with maximum sensitivity and noise suppression for diagnosis of the sinuses. Signal amplification is varied as customary by means of a rotary knob whilst all other commands can be entered using a membrane keypad or foot switch. A perfect combination of function and operability.

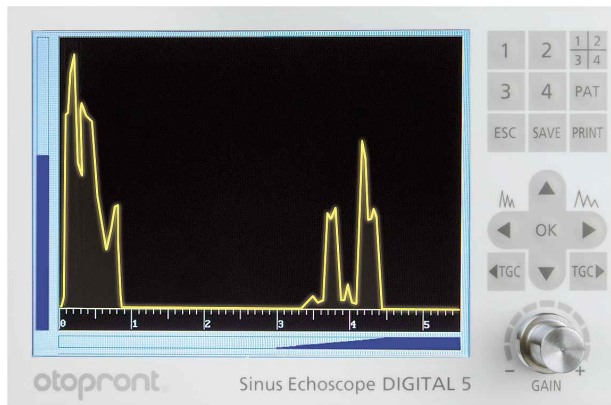
The findings can be documented on an integrated thermal printer or using an external LAN printer (optional).



Built-in thermal printer (optional)



Adjustable LCD screen to ensure optimum visibility for the user



In addition to presenting a single image, the operating software also allows a comparison of up to four echograms.

Technical Data

Ultrasound method	A-mode
Probe	4.25 MHz, Ø 10 mm, 2-6 cm linear focusing
Amplification	65-120 dB, continuously adjustable
Memory	digital 4 image memory, foot switch controlled
Presentation	single image or comparison images
Depth compensation	TGC amplification function, freely scaleable
Image spread	40 to 100 mm
Operator interface	membrane keypad
Screen	flat screen TFT, high-resolution, adjustable
Documentation	thermal printer or via LAN network (optional)
Interface	LAN, electrically isolated accord. to IEC 60601-1 for linking into PC networks (optional)
Power supply	110-230 V~, 50/60 Hz, 25 W
Weight	5 kg
Housing	steel housing, colours according to RAL colour scheme
Dimensions	24.5 x 21 x 29 cm (W x H x D)
CE mark	accord. to MDD 93/42/EEC

All designs and specifications subject to change without notice.

Happersberger otopront

Medical Equipment Manufacturer
D-65329 Hohenstein · P. O. Box · Germany
Tel. +49-6120-9217-0 · Fax +49-6120-9217 60
www.otopront.com · info@otopront.com

otopront®